



## WHAT YOU'LL NEED



1-POINT WIRE (x4)



2-POINT WIRE (x2)



3-POINT WIRE (x1)



ELECTRICAL SWITCH (x1)  
(NPN)



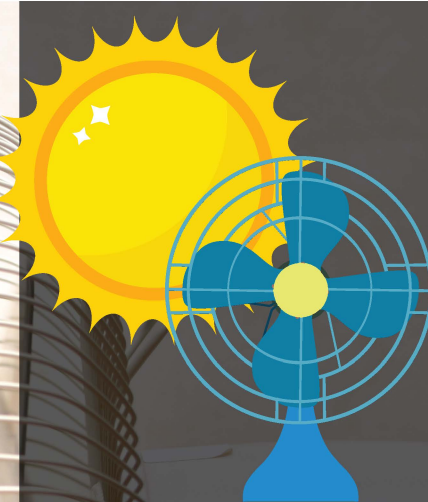
MOTOR (x1)



LIGHT SENSOR (x1)



BATTERY (x1)



## BUILD A Solar Fan

### WHAT YOU'LL LEARN

A light sensor is a kind of switch that can help turn things on and off.

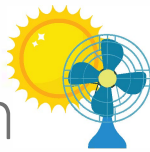
When there is light, the circuit is on; when there is no light, the circuit is off.



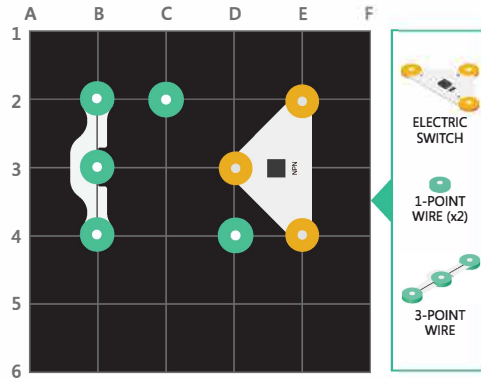
Magnetic, snap-together modules  
for learning basic circuitry

BUILD A

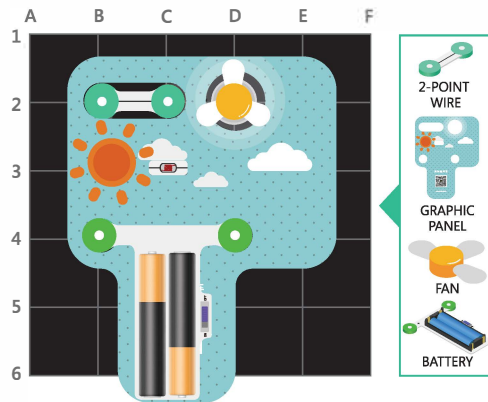
# Solar Fan



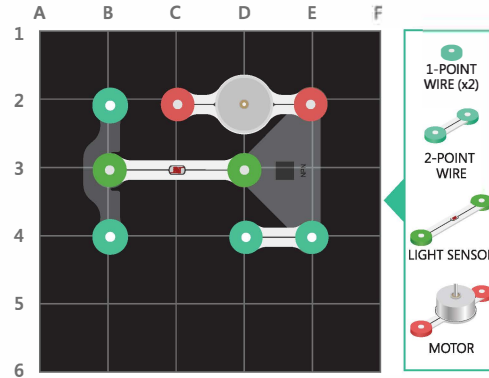
Magnetic, snap-together modules for learning basic circuitry



**Step 1:** Place the NPN, two 1-point wire component, and one 3-point wire component on the board as shown.



**Step 3:** Place one 2-point wire component on top of the pieces from step 2, as shown. Cover the light sensor to make the light go on and off!



**Step 2:** Place two 1-point wire components, one 2-point wire component, the light sensor, and the motor on top of the pieces from step 1, as shown.

